



Hi-End DATA

I.T. SERVICES INC.

GIVING YOU ADVANCED SERVICES TOWARDS IT INNOVATION

COMPANY OVERVIEW

Hi-End Data I.T. Services, Inc. has been established as an I.T. Services provider to deliver technology solution that empowers organizations in order to attain operational excellence and business growth; and it is committed to provide its customers wide variety of quality computer related solutions, peripherals and continuing efficient and prompt service at competitive price.

The company is dedicated to have an honest, sincere and cooperative relationship with its clients, suppliers and the community.

Hi-End Data I.T. Services, Inc. continues to focus strongly on quality of services and has brought on board highly skilled and experienced professionals. Its aim is to consistently deliver quality I.T. service to its customers.

Its manpower is equipped with industry and technology expertise, geared not only towards and specific product but also towards providing the best value to its customers.

" GIVING YOU ADVANCED SERVICES TOWARDS I.T. INNOVATION "

OUR SERVICES

As IT Services Provider the company is able to offer its clients wide range of quality products and services relating to computer hardware, software, network and internet technologies. More specifically, it offers services across the following areas;

- Data Center Infrastructure Solutions
- Environmental Monitoring System
- Precision Cooling System
- Raised Flooring
- Structured Cabling Solutions
- Information Technology Solutions
- Analog and Digital Surveillance Camera System
- Wireless System Solutions
- Fire Suppression System



OUR PRODUCTS



UBIQUITI
NETWORKS

Wireless Systems Solutions



Uninterrupted Power Supply



Racking Solution



Environmental Monitoring Solution



Analog and Digital Surveillance
Camera Solutions



KVM and PDU Solutions



Structured Cabling System



Precision Air-Conditioning Unit



Air Technology Systems, Inc.



Precision Air-Conditioning Unit



Fire Suppression System



Condensed Aerosol Fire Suppression Systems



KVM SWITCHES

ATEN KVM Switches are control units that allow I.T. Administrators to access & control multiple servers from the LCD Console.

FEATURES

- Independently Retractable
- Dual Slide LCD Monitor & Keyboard
- Built-in Touchpad
- PS/2 or USB KVM Console



BENEFITS

- Designed with unique & powerful features
- Manage your entire Server room & Data center devices easily & conveniently
- Space Saving

POWER DISTRIBUTION UNIT

ATEN PDU Products are Intelligent Power Distribution Units that offer outlet level control combined with remote access to give IT Administrators the ability to power control devices attached to the unit.



FEATURES

- Monitors current, voltage and power consumption of their IT equipment
- Supports daisy chain connection
- With real-time power status measurement
- With user-friendly GUI interface & Lock n Plug Design

PRECISION AIR-CONDITIONING UNIT

Precision Air Conditioning Units are used for precise control of Temperature and Humidity required for critical application like Server Room, Data Center, Telco Rooms, etc.

Nowadays, modern IT equipments generates a large amount of heat. Hence, efficient precision air conditioning for Data Center Cooling is a critical factor. Thus, it is very essential to use the correct type of precision cooling.

Hi-End Data I.T. Services Inc., offers a wide range of Precision Cooling System based on your actual requirements.

- Down Flow or Up Flow
- Air cooled type

“ Maintain the temperature and relative humidity within the Data Center at a certain level with these inteliigent precision cooling units...”



STULZ
Air Technology Systems, Inc.




EMERSON[™]


DATA AIRE INC.

Point-Aire

Precision Air-Conditioning Unit



FEATURES

- Maintains Temp. at 18 to 22 Deg, Celsius
- Maintains Humidity at 40 to 60% RH
- Flexible Design and Customizable
- With IP Controller mounted in front
- Air-cooled, Chilled-water and Water-cooled Configuration
- Freeblow or DownBlast Orientation



Racking Solution



FEATURES

- ✓ Perforated Front and Rear Door
- ✓ 42U 600mm Wide x 1070mm Deep
- ✓ Color : Black
- ✓ Server vendor Neutral
- ✓ Cable Access Openings
- ✓ Half-height Side Panels with Lock
- ✓ Low profile castors and leveling feet

The NetShelter SX is a multi-functional rack enclosure influenced by customer feedback from around the world. These enclosures are designed to meet current IT market trends and applications ranging from high density computing and networking to broadcast and audio-video. With a strong focus on cooling, power distribution, cable management and environmental monitoring, the NetShelter SX rack enclosure provides a reliable rack-mounting environment for mission-critical equipment.

ZTFLOOR Access Raised Floor

Raised Flooring Solution

ZTFloor Access Raised Floor line of data center products address all of these needs in a highly adaptable space that provides the ability to respond quickly and easily to client, organizational and technological changes – all while being cost-effective in both construction and operation. With ZTFloor's raised floor solutions, you'll be able to address all of the demands of a data center while meeting the everyday needs of its users in a secure and reliable environment.

Flexible, Adaptable, Scalable & Efficient.



Environmental Monitoring System

AKCess Pro established in 1981, created the market for networked environmental, power and security monitoring solutions. Today, AKCess Pro is the world's oldest and largest manufacturer of networked environmental, power, security and access control monitoring equipment with over 100,000 systems preventing disaster and monitoring infrastructure.

AKCess Pro leads the industry in innovation with a cutting edge Research and Development team in Russia and Thailand.

AKCP environmental monitoring allows for intelligent sensor to be connected to AKCP base units such as the securityProbe or sensorProbe series. Sensors are automatically recognized using AKCP's AutoSense feature. AKCP lets you monitor and control:

- **Temperature**
- **Humidity**
- **Smoke**
- **Water leakage**
- **Air Flow**
- **Security Sensors**
- **Motion Detectors**
- **Detection of AC Power Line Voltage**
- **Measurement of Digital Voltmeter**
- **Control Relays and more...**

The AKCP base units work standalone or can be used with AKCess Pro Server. All sensors include an integrated data collection and graphing package; especially useful in trend and information analysis.

For example, spotWater Sensors can be used to detect water leaks from CRAC systems. Smoke Detectors can be used to detect the initial signs of component fires in data cabinets.

Events that lead to disaster can be used to proactively alert data center staff to maintain equipment correctly or to take corrective action. When events occur, the AKCP base unit or AKCess Pro Server can be configured to send :

- SNMP Traps
- Email Messages
- SMS
- Telephone Calls
- Audio Alerts
- Relay On/Off Signals and more...
- Monitor air flow, temperature and humidity



An essential part of any computer room monitoring system is accurate temperature and humidity monitoring and knowing when CRAC units are on or offline. Rising temperatures lead to system failure, unwanted downtime and costly repairs.

AKCP's equipment helps to avoid these costly errors with easy to configure, cost effective systems that are ready to run, right out of the box.



Uninterrupted Power Supply

Hi-End Data I.T. Services Inc offers a full line of UPS and management software, and we deliver industry-specific solutions worldwide to a broad range of market sectors and industry leaders. Our UPS solutions not only ensure uninterrupted processes with unmatched reliability but also meet your growing business demands with uniquely-designed scalability and flexibility.



We offers differnt type of UPS System

- Rackmounted/ Tower Convertible Type
- Modular UPS
- Single Phase / 3Phase
- Tower/ Conventional Type



STRUCTURED CABLING SOLUTION

Hi-End Data I.T. Services offers a full range of copper data cabling solutions in either category 5e, category 6 or category 6a. Category 5e and category 6 copper data cabling comes in different levels of shielding performance: UTP, FTP or STP, whereas the category 6a copper data cabling is available in reliable, high performance, or STP with Line testing w/ results.

We also offers a high-end copper data cabling system with complete solution consisting of patch panels, patch cords, K-series jacks, cables and faceplates that offers maximum performance at an economic cost. The whole system is based on the K-series jacks which snap on without specialized tooling giving built in reliability and performance exceeding existing standards.



Fibre Data Cabling

Hi-End data offers a full range of fibre data cabling solutions in wide range of different connectivity styles for fibre-to-the-desk, backbones, data centres, storage area networks and industrial or military cabling.



CCTV Surveillance Camera System

HIKVISION

iSECURE
CCTV

KGUARD
SECURITY



Dome Camera



Bullet Camera



Network IP Camera



PTZ Camera



**Digital Video Recorder
Network Video Recorder**

Door Access Control and Biometric Time & Attendance



ACCESSORIES



connective



Fire Protection System

Hi-end Data I.T. Services Inc. offers a wide variety of fire protection systems, ensuring that we will be able to provide the highest quality of protection for any facility. Our Sales Consultants and Project Managers work closely with clients to provide detailed explanations for each type of fire protection system available and the benefits of choosing a particular system type.

We will help you choose the system that best fits your needs for simplicity, reliability and ease of maintenance.

Each fire protection system for both new construction and existing buildings is custom designed to meet all applicable codes, time and budgetary guidelines dictated by clients as well as local and national regulations.

Many of our systems are available with specialized features such as concealed:

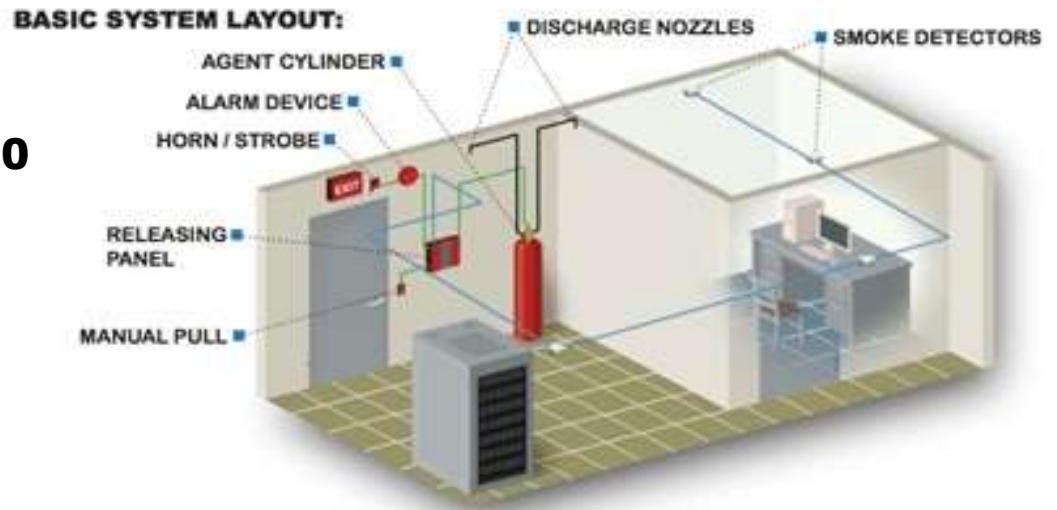
1. Fire Suppression System
2. Fire Detection and Alarm System
3. FirePro System
4. In-cabinet Suppression System
5. Kitchen Suppression System
6. Automatic Fire Sprinkler System
7. Deluge Fire Sprinkler System
8. Pre-Action Fire Sprinkler System
9. Dry/Wet Pipe Fire Sprinkler System
10. Fire Hydrant System
11. Foam System
12. Fire Extinguisher (Portable/Wheeled Type)
13. Other Accessories and a variety of materials.

The fire protections systems are provided include:

**DESIGN – CONTRACTOR – SUPPLY COMMISSIONING – PREVENTIVE
MAINTENANCE**

I. Fire Suppression System

- A. **FM200**
- B. **NOVEC1230**
- C. **ARGONITE**
- D. **CO2**



A system consisting of an agent supply and distribution piping network designed to achieve a minimum agent concentration through the entire hazard volume. A suitable agent for normally occupied space and waterless fire protection system, it is discharged into the risk within 10 seconds and suppresses the fire immediately.

It is advance delivery 725 psi High Pressure System Approved by:
UL – Under Laboratory (Clean Agent Extinguishing System Unit)
FM – Factory Mutual (Clean Agent Fire Extinguishing System)

Applications:

- **Compute Rooms**
- **Telecommunication Centers**
- **Records and Data Archives**
- **Chemical Laboratories**
- **Clean Rooms – School, Office Buildings**
- **Museums/Galleries/Art Collections**
- **Hospitals**
- **Power Generation**
- **Flammable Liquid Storage**
- **Electric Utility Facilities**
- **Media Storage**
- **Textile Manufacturing**

II. Fire Detection And Alarm System



a. Conventional Type

b. Addressable Type

It detect fires at an early stage. Safe and fast fire detection is an essential component of a reliable fire protection concept. The earlier a fire is detected, the smaller are dangers and damages caused by the fire.

The cooperation of fire protection control panels, detectors and alarm facilitates a fast reaction in case of fire - Ideally, by automatic activation of an extinguishing system. In this way, it will have the situation under control immediately.

III. FirePro Fire Extinguishing Aerosol System

FirePro Systems or simply FirePro, is a European automatic fire suppression engineering company specializing in the design, production and distribution of environmentally friendly active fire protection systems.



IV. In-cabinet Suppression System

A. Direct – HFC 227ea

Pre-engineered FireDETEC electrical cabinet fire suppression System with HFC-227ea giving clean agent fire protection for smaller electrical cabinet applications.

Key advantages:

- The FireDETEC automatic fire detection and automatic fire extinguishing system is ideal for smaller enclosures < 1m³
- A complete, ready-to-install FireDETEC automatic fire suppression system – all in one box
- FireDETEC direct system: the discharge is back through the sensor tube burst hole
- Available in choice of two cylinder sizes: 1.36 Kg and 3.18 Kg CE-approved cylinders only



B. Indirect – HFC 227ea

Pre-engineered FireDETEC electrical cabinet fire suppression system with HFC-227ea giving clean agent fire protection for electrical cabinet applications.



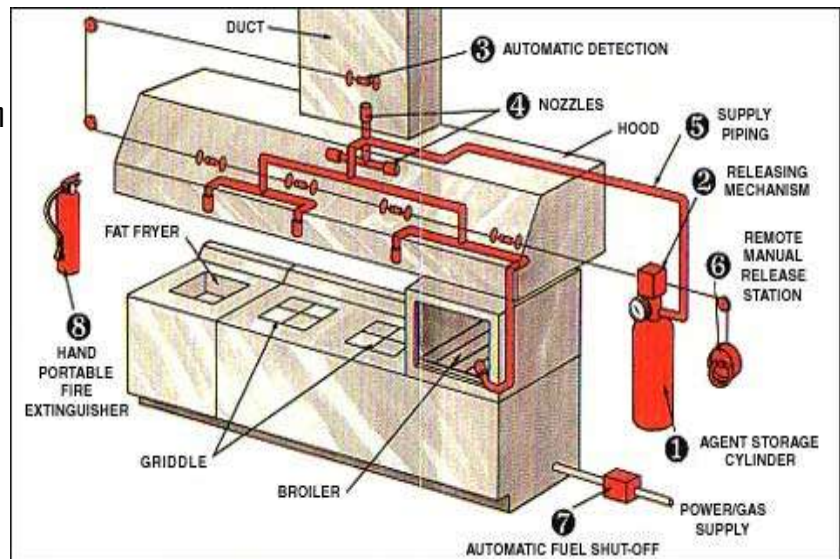
Key advantages:

- A complete, ready-to-install FireDETEC automatic fire suppression system – all in one box
- The FireDETEC automatic fire detection and automatic fire extinguishing system includes: cylinder/valve assembly with HFC-227ea, mounting bracket, fire detection subsystem and discharge subsystem.
- Available in choice of three cylinder sizes: 1.36 Kg, 3.18 Kg and 6.35 Kg
- Cylinders are available filled or unfilled CE-approved cylinders Only.

V. Kitchen Suppression System

Wet chemical suppression system is used to protect modern commercial kitchen from potential threats like open flame, red hot cooking surface and heavily grease laden environment which in turn leads to oil and grease fires.

The system design complies with NFPA 96 and NFPA 17A Standards.



VI. Fire Sprinkler System

Sprinkler System distributes water to sprinkler which spray water into space, providing active fire protection. They are a well-established technology and have demonstrated their ability and effectiveness in protecting life and property. Traditionally they have mainly been used in commercial and industrial properties, but they are now available for a wide range of applications, including domestic buildings.

A. Wet Fire Sprinkler System

Wet pipe systems are the most common fire sprinkler system. A wet pipe system is one in which water is constantly maintained within the sprinkler piping. When a sprinkler activates this water is immediately discharged onto the fire.



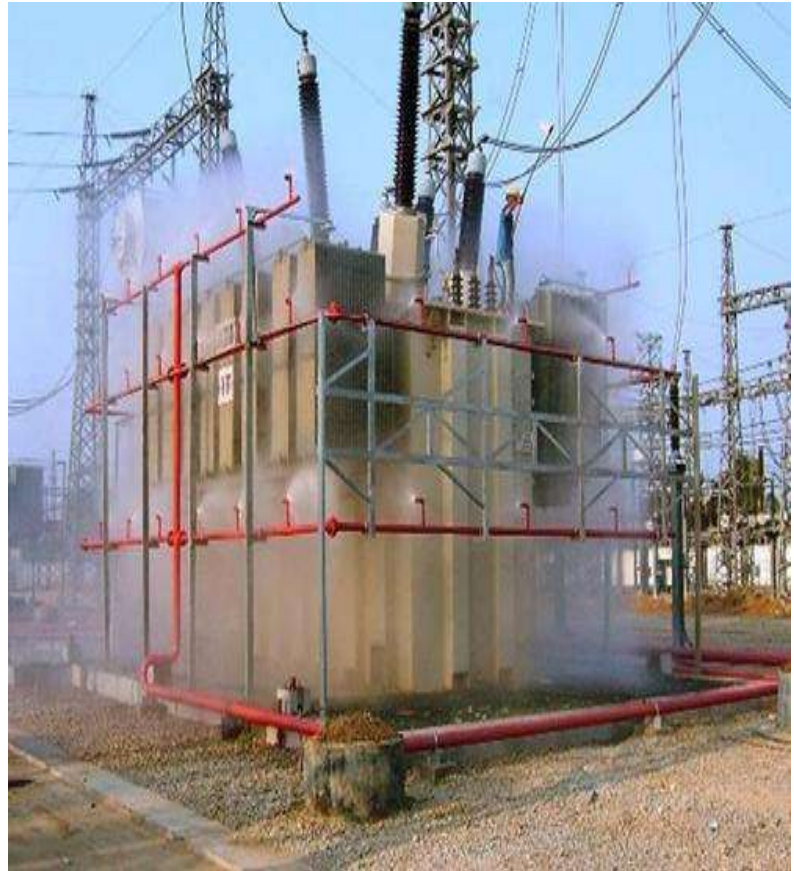
B. Dry Fire Sprinkler System

A dry pipe sprinkler system is one in which pipes are filled with pressurized air or nitrogen, rather than water. This air holds a remote valve, known as a dry pipe valve, in a closed position. Located in a heated space, the dry-pipe valve prevents water from entering the pipe until a fire causes one or more sprinklers to operate. Once this happens, the air escapes and the dry pipe valve releases. Water then enters the pipe, flowing through open sprinklers onto the fire.

C. Deluge Fire Sprinkler System

Deluge Fire Sprinkler System feature open-type sprinkler heads attached to a dry pipe that is connected to a main water supply. Using an innovative detection system that recognizes smoke or heads, this fire suppression installation activates a valve that releases water to all sprinklers.

Deluge Fire Sprinkler System includes open-type sprinkler heads and pipes without air pressurization. However, rather than requiring individual. Sprinkler heads to release water when the systems discharge. Deluge systems emit water from every sprinkler. This rush of water is designed to quickly smother all varieties of chemical and mechanical fires, increasing personnel and property safety.



D. Pre-Action Fire Suppression System

Pre-action fire sprinkler systems employ the basic concept of a dry pipe system in that water is not normally contained within the pipes. The difference, however, is that water is held from piping by an electrically operated valve, known as a pre-action valve. Valve operation is controlled by independent flame, heat, or smoke detection.

In some instances, the pre-action fire sprinkler system may be set up with a double interlock in which pressurized air or nitrogen is added to system piping. The purpose of this feature is two-fold: first to monitor piping for leaks and second to hold water from system piping in the event of inadvertent detector operation. The most common application for this system type is in freezer warehouses.

E. Foam Water Sprinkler System

A foam water fire sprinkler system is a special application system, discharging a mixture of water and low expansion foam concentrate, resulting in a foam spray from the sprinkler. These systems are usually used with special hazards occupancies associated with high challenge fires, such as flammable liquids, and airport hangars. Operation is as described above, depending on the system type into which the foam is injected.



VII. Fire Extinguisher (Portable/Wheeled Type)

- a. A,B,C, Dry Chemical
- b. HCFC1230
- c. HCFC123(Ceiling Type)
- d. AFFF
- e. CO₂



Our Products



A UTC Fire & Security Company



CHEMETRON
Fire System



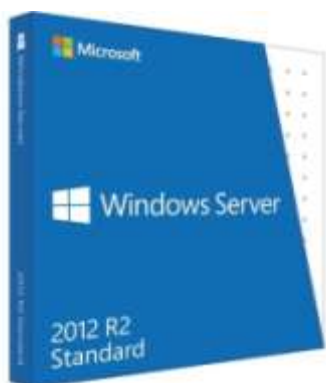
A UTC Fire & Security Company



ASENWARE LTD.

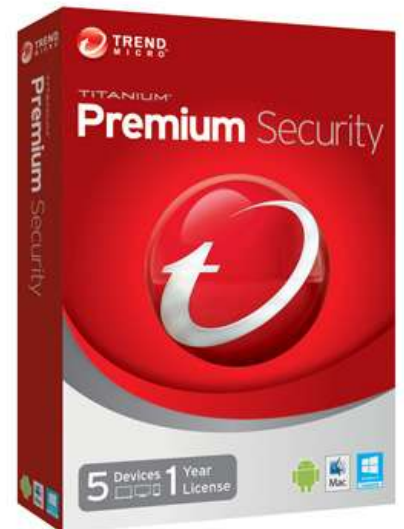
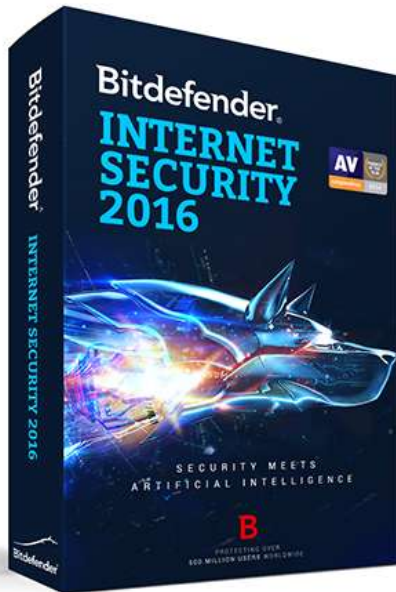
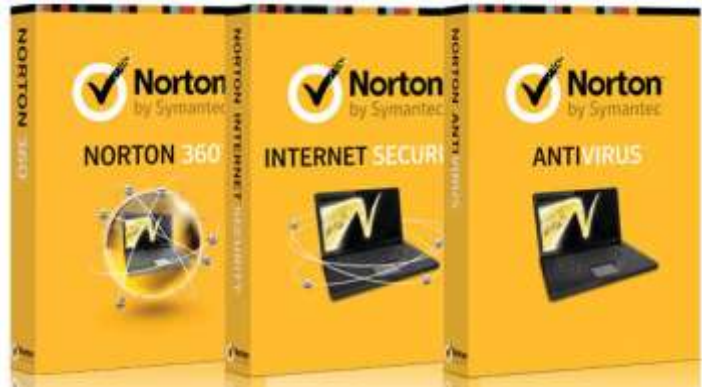


Software and Antivirus

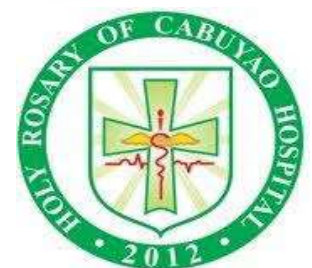


SharePoint
Lync
Exchange





Clients' List



3/F Room 302 ANY Building # 38 Timog Avenue, Quezon City
Telephone # 411-1254 / 416-6861 CP # 09956427392

Email: info@hi-enddata.com; marlon@hi-enddata.com; sally.hienddata@gmail.com; ann.hienddata@gmail.com

Website: www.hi-enddata.com

"Giving you advanced services towards I.T. innovation"